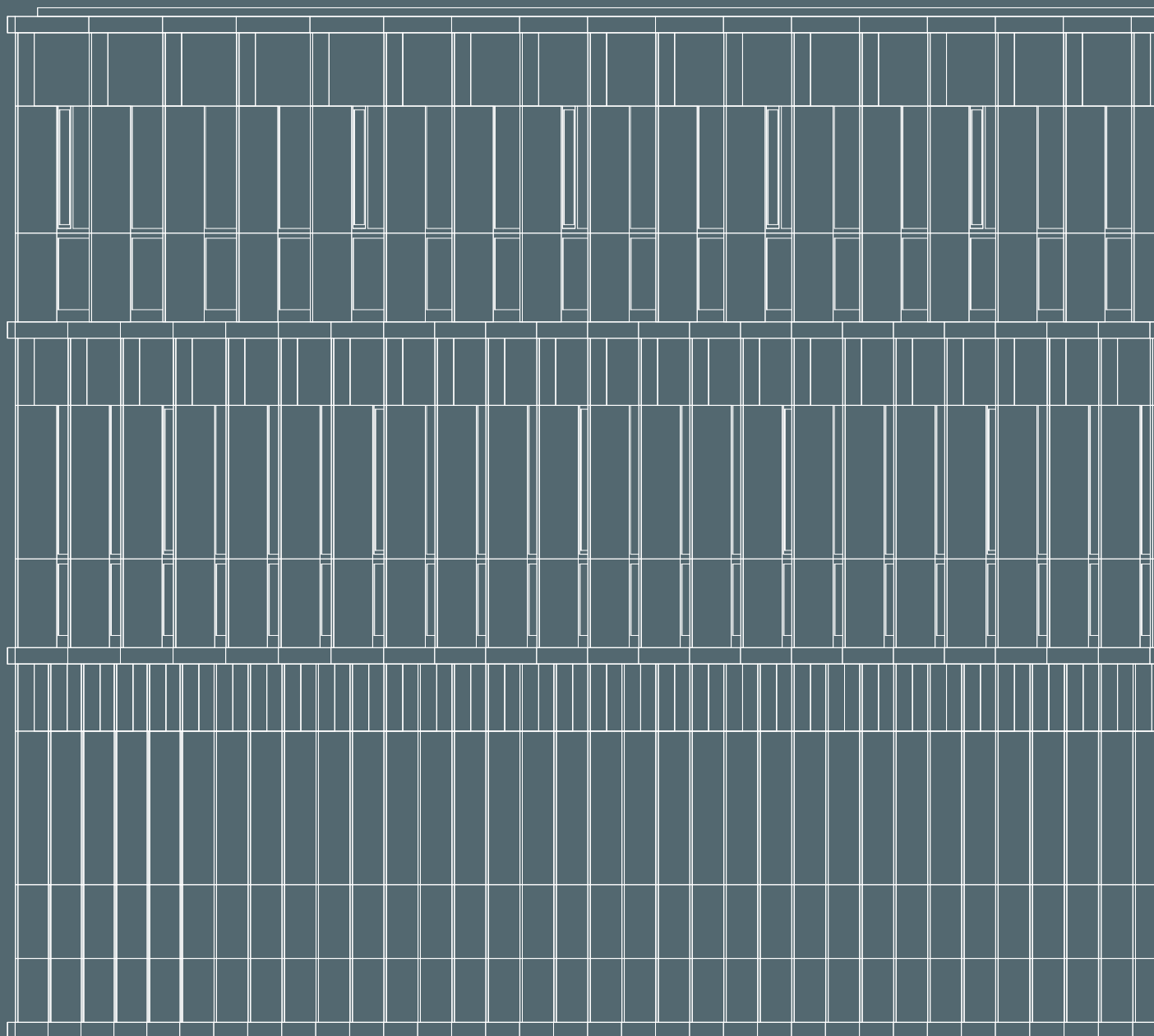


# Indicative Building Plans



# Floor Plan Ground Floor

## TECHNICAL SPECIFICATIONS

Ceiling height  
5.80 m

Floor load  
2 t/m<sup>2</sup>

- Rental area (A: 4,100 m<sup>2</sup>/B: 4,000 m<sup>2</sup>)
- Lifts and staircases
- Logistic area
- Terrace
- Tank storage (O<sub>2</sub>, N<sub>2</sub>, CO<sub>2</sub>, etc.)
- Entrances
- Access to cargo lifts



# Floor Plan 1st Floor

## TECHNICAL SPECIFICATIONS

**Ceiling height**  
A: 4.40 m/B: 3.55 m

**Floor load**  
1t/m<sup>2</sup>

■ Rental area (A: 4,800 m<sup>2</sup>/B: 4,700 m<sup>2</sup>)

■ Lifts and staircases

▤ Patio (A: 460 m<sup>2</sup>/B: 500 m<sup>2</sup>)



Building

A



Building

B



# Floor Plan 2nd Floor

## TECHNICAL SPECIFICATIONS

**Ceiling height**  
A: 4.40 m/B: 3.55 m

**Floor load**  
1t/m<sup>2</sup>

■ Rental area (A: 4,500 m<sup>2</sup>/B: 4,800 m<sup>2</sup>)

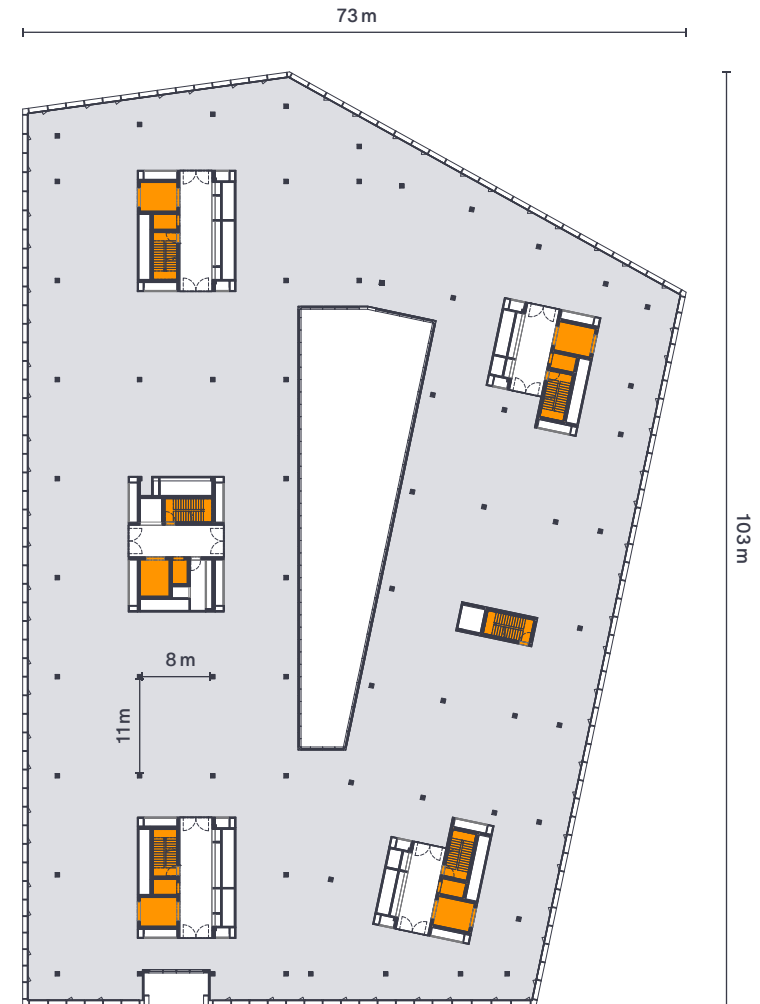
■ Lifts and staircases

■ Terrace (A: 370 m<sup>2</sup>)



Building

A



Building

B



# Floor Plan 3rd Floor

## TECHNICAL SPECIFICATIONS

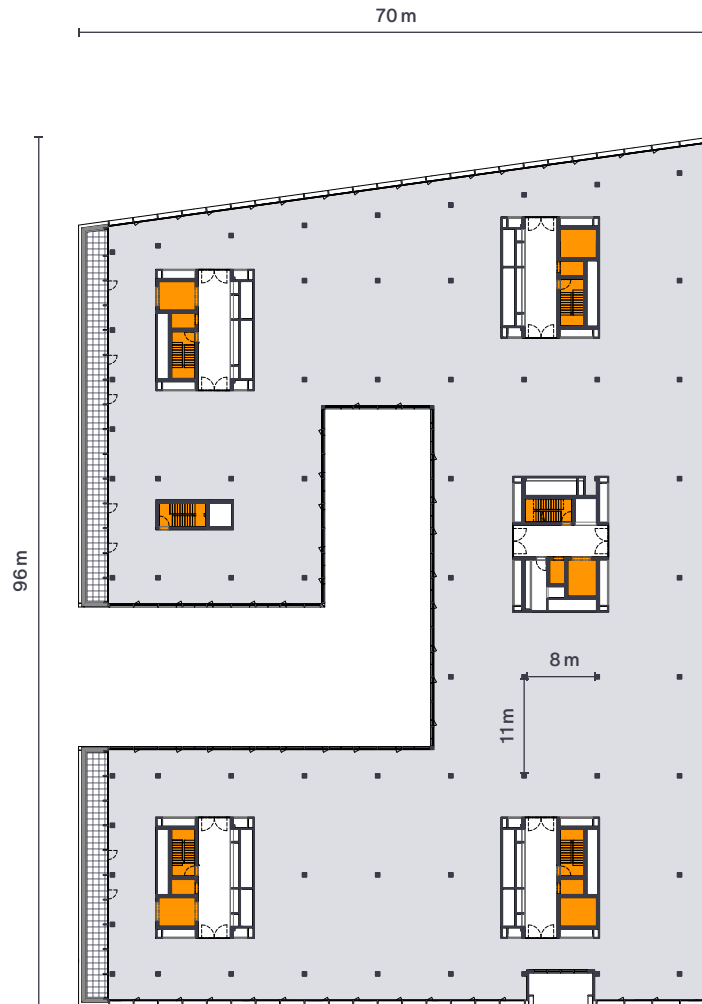
Ceiling height  
3.00 m

Floor load  
500 kg/m<sup>2</sup>

 Rental area (A: 4,300 m<sup>2</sup>/B: 4,800 m<sup>2</sup>)

 Lifts and staircases

 Balcony (A: 160 m<sup>2</sup>)



Building



Building



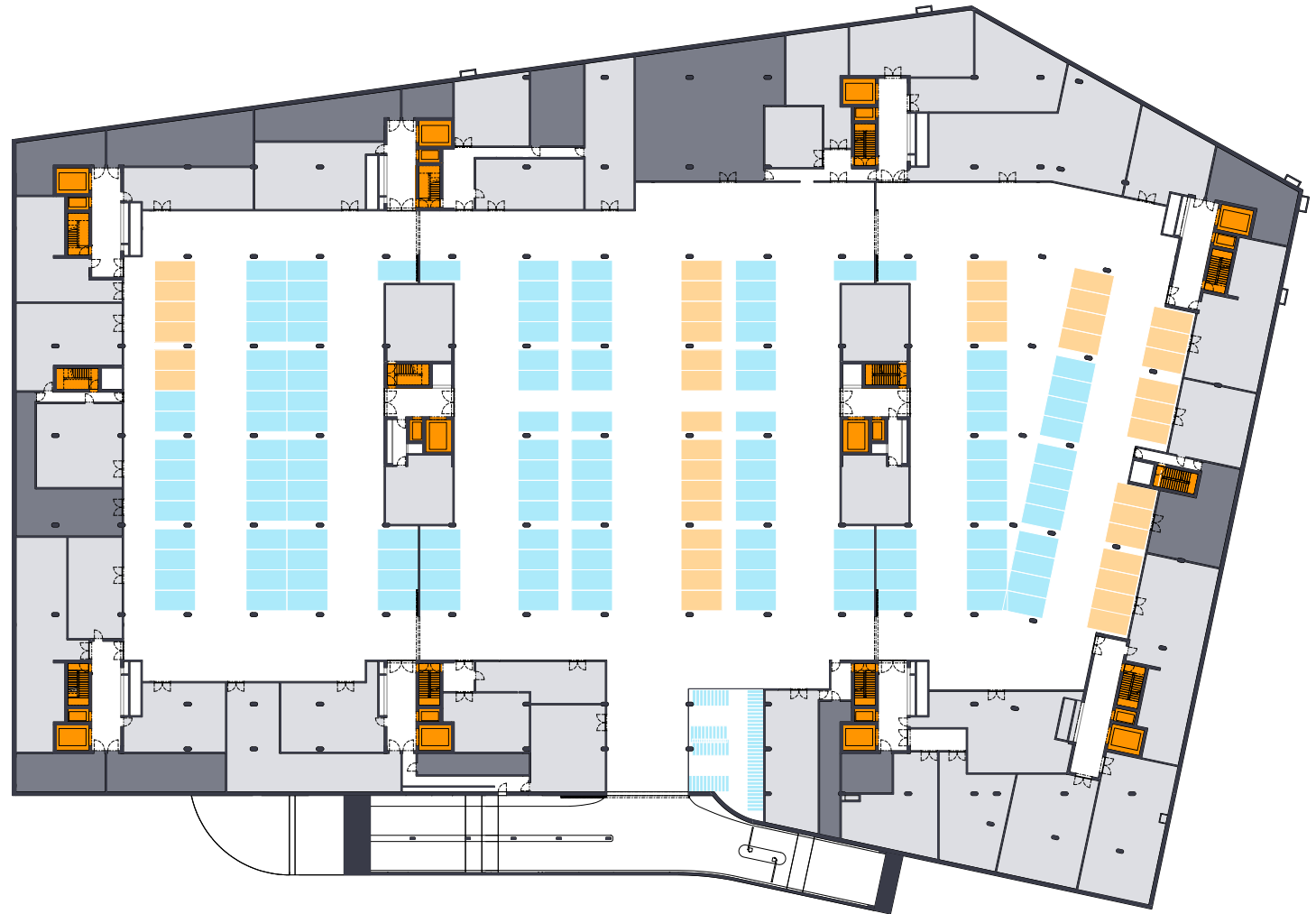
# Floor Plan Basement -1

## TECHNICAL SPECIFICATIONS

Ceiling height  
4.40 m

Floor load  
2 t/m<sup>2</sup>

- Storage/tenant technical areas (3,900 m<sup>2</sup>)
- Lifts and staircases
- Technical areas
- Parking (150 spaces)
- Fleet parking



# Floor Plan Basement -2

## TECHNICAL SPECIFICATIONS

Ceiling height  
3.30 m

Floor load  
1t/m<sup>2</sup>

- Storage (1,700 m<sup>2</sup>)
- Lifts and staircases
- Technical areas
- Parking (300 spaces)

